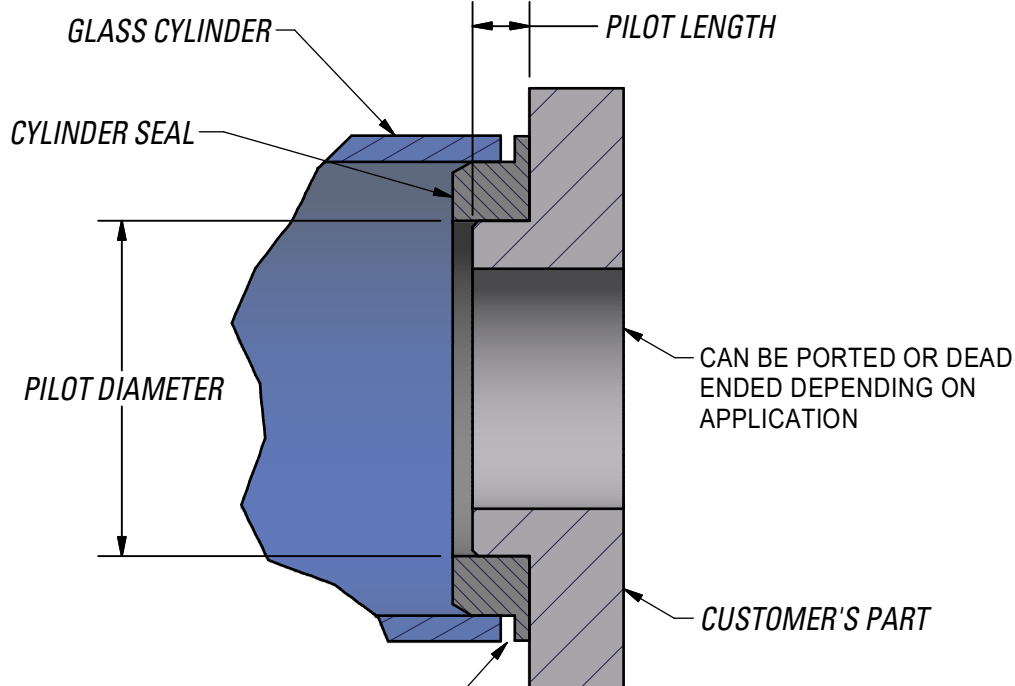


CONNECT TOGETHER WITH A STRUCTURAL TUBE, TIE-RODS, OR BASE PLATE



DETAIL A

MODEL	2K56 and 2KS56	2K95 and 2KS95	2K160 and 2KS160	2K240 and 2KS240	2K325 and 2KS325	2K444 and 2KS444
BORE	.220 [5.6]	.366 [9.3]	.627 [15.9]	.945 [24.0]	1.281 [32.5]	1.750 [44.5]
PILOT DIAMETER	.154 ±.001 [3.91 ±0.03]	.251 ±.001 [6.38 ±0.03]	.381 ±.001 [9.68 ±0.03]	.698 ±.001 [17.73 ±0.03]	1.040 ±.002 [26.42 ±0.05]	1.250 ±.002 [31.75 ±0.05]
PILOT LENGTH	.085 ±.004 [2.2 ±0.1]	.170 ±.004 [4.3 ±0.1]	.090 ±.004 [2.3 ±0.1]	.118 ±.004 [3.0 ±0.1]	.300 ±.006 [7.6 ±0.2]	.250 ±.006 [6.4 ±0.2]
MOUNTING SPACING	STROKE + .525 [STROKE + 13.34]	STROKE + .865 [STROKE + 21.97]	STROKE + .885 [STROKE + 22.48]	STROKE + .925 [STROKE + 23.50]	STROKE + 1.633 [STROKE + 41.48]	STROKE + 1.514 [STROKE + 38.46]
CYLINDER LENGTH	STROKE + .445 [STROKE + 11.30]	STROKE + .670 [STROKE + 17.02]	STROKE + .800 [STROKE + 20.32]	STROKE + .840 [STROKE + 21.34]	STROKE + 1.350 [STROKE + 34.29]	STROKE + 1.325 [STROKE + 33.66]



Use silicone rubber Airpot Cylinder Seals to easily mount and seal Airpot glass cylinders.

For models 56, 95, 325 and 444, put the seal first on the cylinder then push onto the pilot. For models 160 and 240, put the seal first on the pilot, then push the cylinder over the seal.

	35 LOIS ST NORWALK CT 06851 US		203-846-2021 www.airpot.com
	DRAWING NAME CYLINDER SEAL TABLE		DATE 11/13/2012
UNLESS NOTED, ALL DIMENSIONS: IN [mm]		DRAWING NUMBER CYLINDER SEAL TABLE	REV 0206AF